

# YALÇIN GOLD BATTERY

## 12 OPzS 1200 (2V1200AH)

### Specification

Nominal Voltage	2V	
Capacity(10HR)	1200.0AH (1.8V/cell,20°C)	
Dimension	Length	275±2mm (10.8 inches)
	Width	210±3mm (8.27 inches)
	Container Height	646±3mm (25.4 inches)
	Total Height (with Terminal)	701±3mm (27.6 inches)
	Without Electrolyte	67.7 kg (148.9lbs)
Approx Weight	With Electrolyte	91.7 kg (201.7lbs)
	Container Material	SAN transparent container
Rated Capacity	1200.0 AH/120.0A	(10hr, 1.80V/cell, 20°C/68°F)
	1066.0 AH/213.2A	(5hr, 1.75V/cell, 20°C/68°F)
	925.2 AH/308.4A	(3hr, 1.75V/cell, 20°C/68°F)
	685.2 AH/685.2A	(1hr, 1.60V/cell, 20°C/68°F)
Max. Discharge Current	9600A (5s)	
Internal Resistance	Approx 0.23mΩ	
Operating Temp.Range	Discharge	-15~55°C (5~131°F)
	Charge	0~45°C (32~113°F)
	Storage	-15~45°C (5~113°F)
Type and number of poles	M8/4	
Charging	Floating voltage: 2.23V~2.25V at 20°C(68°F)Temp.	
	Boost charge: 2.30V~2.40V at 20°C(68°F)Temp.	
	Charging current(max.): 0.1CA	
	Temp.Coefficient -3mV/°C	
Capacity affected by Temperature	40°C (104°F)	103%
	25°C (77°F)	100%
	0°C (32°F)	86%
Self Discharge (4% per month)	Gold OPzS batteries may be stored for up to 6 months at 20°C(68°F) and then a freshening charge is required. For higher temperatures the time interval will be shorter.	



### Applications

- ◆ Telecommunications.
- ◆ Radio and cellular telephone relay stations.
- ◆ Emergency lighting systems.
- ◆ Power stations, Conventional power stations,
- ◆ Alternative power (solar, wind).
- ◆ Large UPS and computer back-up.
- ◆ Railway signalling.
- ◆ Maritime standby power on ships and ashore.
- ◆ Standby power.
- ◆ Buoy lighting.
- ◆ Long service life, designed life 15-20 years.

### Constant Current Discharge (Amperes) at 20 °C (68°F)

F.V/Time	30min	45min	1h	1.5h	2h	3h	4h	5h	6h	8h	10h	20h
1.60V/cell	909.6	790.4	685.2	540.0	446.4	333.6	268.2	226.8	196.3	155.4	128.3	69.6
1.65V/cell	854.4	760.0	662.4	526.4	436.2	328.0	264.3	223.8	193.6	153.5	126.8	68.9
1.70V/cell	811.2	716.8	637.2	509.6	426.0	318.4	258.3	218.9	190.0	150.8	124.7	68.0
1.75V/cell	760.8	683.2	604.8	485.6	408.0	308.4	250.5	213.2	185.4	148.3	122.7	66.8
1.80V/cell	676.8	616.0	556.8	455.2	383.4	292.8	239.8	204.4	178.6	144.2	120.0	65.6
1.85V/cell	540.0	510.4	476.4	404.8	348.0	268.0	221.9	191.5	168.2	137.1	114.9	63.1

### Constant Power Discharge (Watts) at 20 °C (68°F)

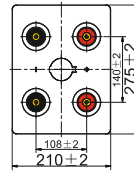
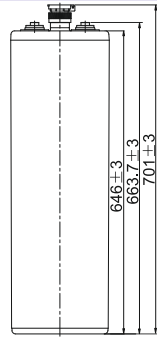
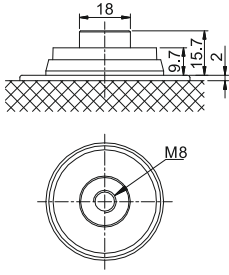
F.V/Time	30min	45min	1h	1.5h	2h	3h	4h	5h	6h	8h	10h	20h
1.60V/cell	1552.7	1383.2	1216.6	970.8	811.8	611.0	495.5	421.9	367.6	292.1	242.3	131.9
1.65V/cell	1490.2	1345.7	1185.8	951.1	797.2	603.7	490.8	418.4	364.4	290.0	240.7	131.3
1.70V/cell	1434.2	1282.6	1149.3	926.8	781.9	588.9	481.2	411.0	358.7	286.1	237.5	130.0
1.75V/cell	1367.7	1235.5	1101.2	889.5	754.4	574.0	469.1	402.0	351.2	282.3	234.6	128.4
1.80V/cell	1233.3	1130.9	1026.8	843.5	715.2	549.1	451.8	387.2	340.4	276.0	230.8	126.6
1.85V/cell	1000.6	950.7	891.5	760.3	656.4	508.0	422.3	366.1	323.1	264.4	222.7	122.8

Specifications subject to change without notice.

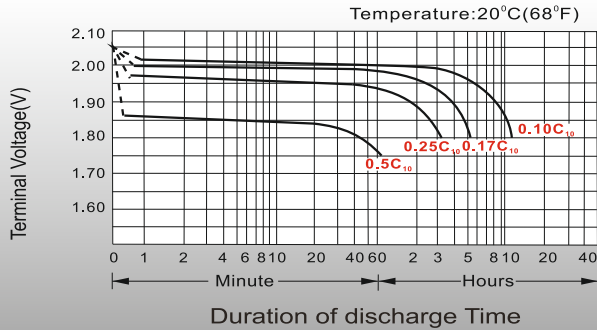


## Dimensions

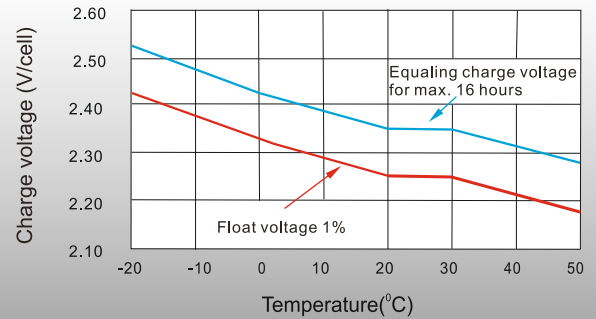
### Terminal



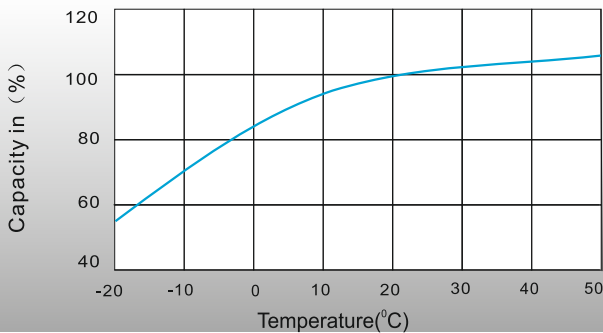
## Discharge Characteristics



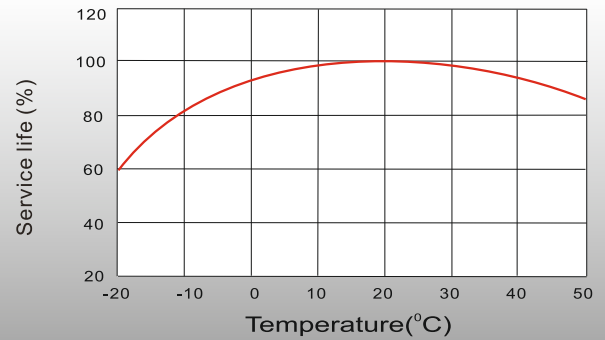
## Charge voltage Vs ambient temperature curve



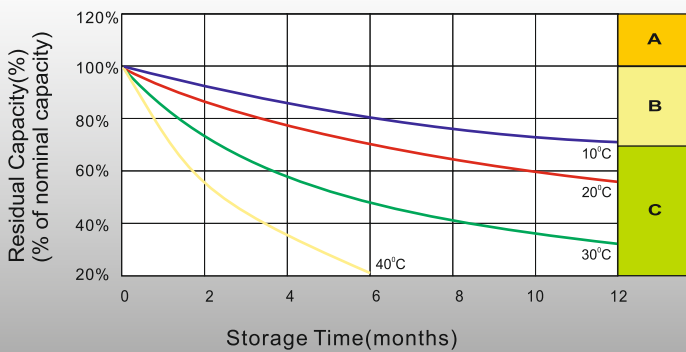
## Discharge capacity Vs Ambient temperature curve (I10A)



## Relation curves of service life and ambient temperature



## Self Discharge Characteristics



- A** No supplementary charge required  
(Carry out supplementary charge before use if 100% capacity is required.)
- B** Supplementary charge required before use. Optional charging way as below:
  1. Charged for above 3 days at limited current 0.1CA and constant voltage 2.25V/cell.
  2. Charged for above 20 hours at limited current 01CA and constant voltage 2.45V/cell.
  3. Charged for 8~10 hours at limited current 0.05CA .
- C** Supplementary charge may often fail to recover the capacity.  
The battery should never be left standing till this is reached

**Merkez**

100. Yıl Bulvarı 1232. Sokak  
(Eski 40. Sokak) No: 65  
Ostim / ANKARA

**Tel&Fax**

T. (0.312) 354 16 45  
(0.312) 385 55 60  
F. (0.312) 354 07 97

**Servis**

100. Yıl Bulvarı 1234. Sokak  
(Eski 57. Sokak) No: 91  
Ostim / ANKARA

**Fabrika**

Kırıkkale OSB Kızılırmak Caddesi  
4. Sokak No: 6  
Yahşihan / KIRIKKALE