

# YALÇIN GOLD BATTERY

## 20 OPzS 2500 (2V2500AH)

### Specification

Nominal Voltage	2V	
Nominal Capacity(10HR)	2500.0AH (1.8V/cell,20°C)	
Dimension	Length	487 ± 3mm (19.2 inches)
	Width	212 ± 3mm (8.35 inches)
	Container Height	772 ± 3mm (30.4 inches)
	Total Height (with Terminal)	827 ± 3mm (32.56 inches)
Approx Weight	Without Electrolyte	139.4 kg (306.68lbs)
	With Electrolyte	189.4 kg (416.68lbs)
Container Material	SAN transparent container	
Rated Capacity	2500.0 AH/250.0A	(10hr, 1.80V/cell, 20°C/68°F)
	2220.5 AH/444.1A	(5hr, 1.75V/cell, 20°C/68°F)
	1927.5 AH/642.5A	(3hr, 1.75V/cell, 20°C/68°F)
	1427.5 AH/1427.5A	(1hr, 1.60V/cell, 20°C/68°F)
Max. Discharge Current	20000A (5s)	
Internal Resistance	Approx 0.13mΩ	
Operating Temp.Range	Discharge	-15~50°C (5~122°F)
	Charge	0~40°C (32~104°F)
	Storage	-15~40°C (5~104°F)
Type and number of poles	M8	
Charging	Floating voltage: 2.23V~2.25V at 20°C(68°F)Temp.	
	Boost charge: 2.30V~2.40V at 20°C(68°F)Temp.	
	Charging current(max.): 0.1CA	
	Temp.Coefficient -3mV/°C	
Capacity affected by Temperature	40°C (104°F)	103%
	25°C (77°F)	100%
	0°C (32°F)	86%
Self Discharge	Gold OPzS batteries may be stored for up to 6 months at 20°C(68°F) and then a freshening charge is required. For higher temperatures the time interval will be shorter.	



### Applications

- ◆ Telecommunications.
- ◆ Radio and cellular telephone relay stations.
- ◆ Emergency lighting systems.
- ◆ Power stations, Conventional power stations,
- ◆ alternative power (solar, wind).
- ◆ Large UPS and computer back-up.
- ◆ Railway signalling.
- ◆ Maritime standby power on ships and ashore.
- ◆ Standby power.
- ◆ Buoy lighting.
- ◆ Long service life, designed life 15-20 years.

### Constant Current Discharge (Amperes) at 20 °C (68°F)

F.V/Time	30min	45min	1h	1.5h	2h	3h	4h	5h	6h	8h	10h	20h
1.60V/cell	1895.0	1646.7	1427.5	1125.0	930.0	695.0	558.8	472.5	409.0	323.6	267.4	145.0
1.65V/cell	1780.0	1583.3	1380.0	1096.7	908.8	683.3	550.6	466.2	403.4	319.7	264.2	143.6
1.70V/cell	1690.0	1493.3	1327.5	1061.7	887.5	663.3	538.1	456.1	395.8	314.1	259.9	141.6
1.75V/cell	1585.0	1423.3	1260.0	1011.7	850.0	642.5	521.9	444.1	386.3	308.9	255.5	139.3
1.80V/cell	1410.0	1283.3	1160.0	948.3	798.8	610.0	499.6	425.7	372.1	300.4	250.0	136.6
1.85V/cell	1125.0	1063.3	992.5	843.3	725.0	558.3	462.3	399.0	350.4	285.6	239.4	131.4

### Constant Power Discharge (Watts) at 20 °C (68°F)

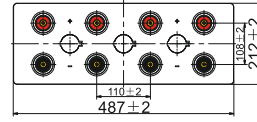
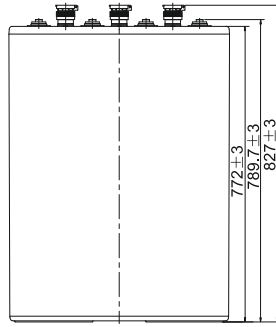
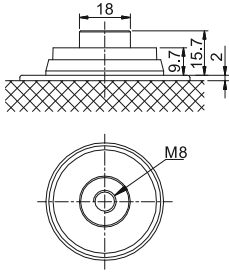
F.V/Time	30min	45min	1h	1.5h	2h	3h	4h	5h	6h	8h	10h	20h
1.60V/cell	3234.8	2881.7	2534.5	2022.4	1691.2	1272.9	1032.3	879.0	765.8	608.6	504.8	274.9
1.65V/cell	3104.5	2803.6	2470.5	1981.4	1660.8	1257.8	1022.4	871.7	759.1	604.2	501.4	273.6
1.70V/cell	2987.9	2672.0	2394.4	1930.9	1629.0	1226.9	1002.6	856.2	747.2	596.0	494.8	270.8
1.75V/cell	2849.5	2573.9	2294.2	1853.2	1571.6	1195.8	977.3	837.5	731.6	588.1	488.8	267.5
1.80V/cell	2569.3	2356.1	2139.2	1757.3	1490.0	1144.0	941.2	806.7	709.1	575.1	480.8	263.8
1.85V/cell	2084.6	1980.6	1857.2	1584.0	1367.4	1058.3	879.7	762.6	673.1	550.9	463.9	255.8

Specifications subject to change without notice.

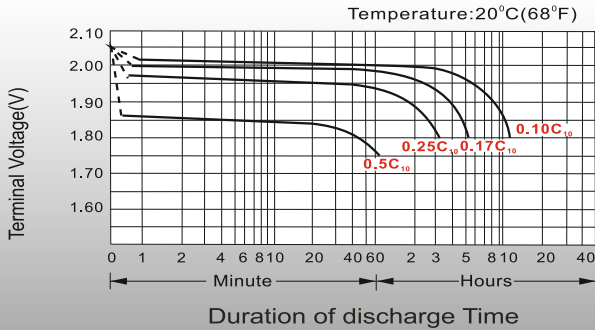


## Dimensions

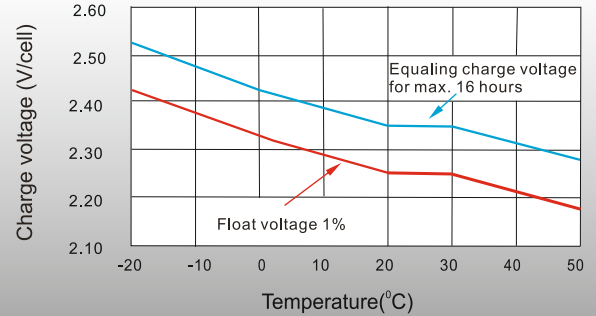
### Terminal



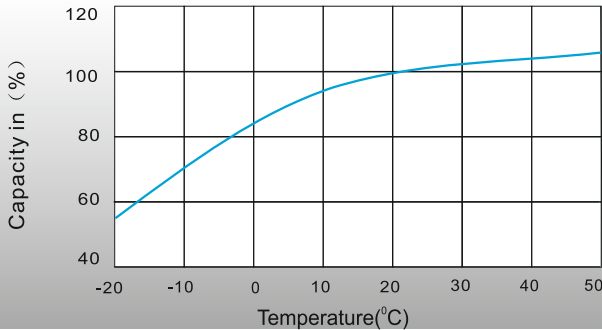
### Discharge Characteristics



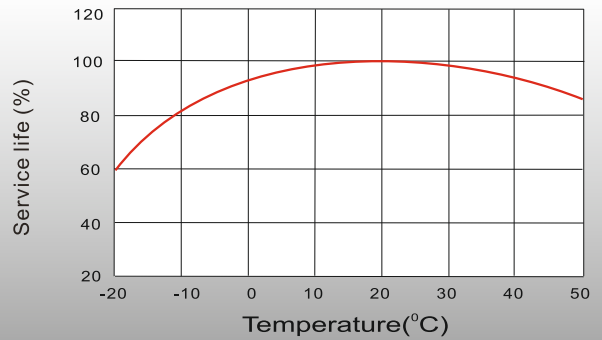
### Charge voltage Vs ambient temperature curve



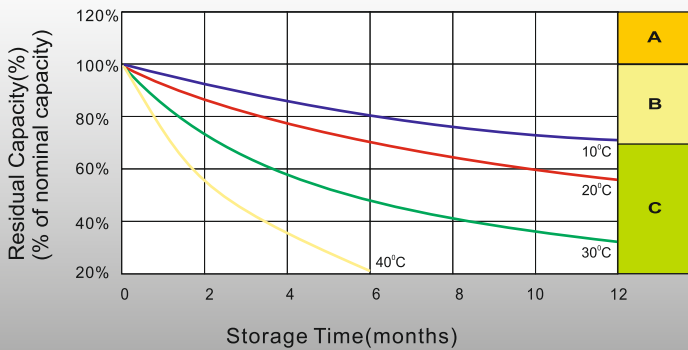
### Discharge capacity Vs Ambient temperature curve (I10A)



### Relation curves of service life and ambient temperature



### Self Discharge Characteristics



- A** No supplementary charge required  
(Carry out supplementary charge before use if 100% capacity is required.)
- B** Supplementary charge required before use. Optional charging way as below:
  1. Charged for above 3 days at limited current 0.1CA and constant voltage 2.25V/cell.
  2. Charged for above 20 hours at limited current 0.1CA and constant voltage 2.45V/cell.
  3. Charged for 8~10 hours at limited current 0.05CA.
- C** Supplementary charge may often fail to recover the capacity.  
The battery should never be left standing till this is reached.

**Merkez**

100. Yıl Bulvarı 1232. Sokak  
(Eski 40. Sokak) No: 65  
Ostim / ANKARA

**Tel&Fax**

T. (0.312) 354 16 45  
(0.312) 385 55 60  
F. (0.312) 354 07 97

**Servis**

100. Yıl Bulvarı 1234. Sokak  
(Eski 57. Sokak) No: 91  
Ostim / ANKARA

**Fabrika**

Kırıkkale OSB Kızılırmak Caddesi  
4. Sokak No: 6  
Yahşihan / KIRIKKALE