

# YALÇIN GOLD BATTERY

## GDC12230.0 (12V230AH)

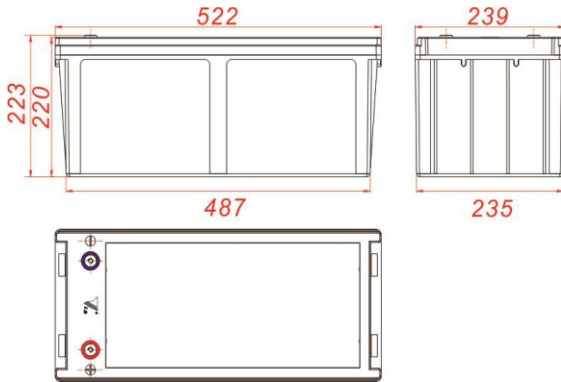
### GENERAL FEATURES

- ◆ Oxygen recombination technology: Maintenance Free VRLA Battery, no need to add water or acid
- ◆ The patent grid alloy: less gassing, low self-discharge, excellent corrosion resistance performance
- ◆ Special paste formula: additives are added to improve deep discharge, long cycle life
- ◆ High quality AGM separator: extend cycle life and prevent micro short circuit
- ◆ The patent Nano silica gel electrolytes, extend cycle life and improve the deep discharge performance
- ◆ ABS container: increase the strength of battery (Flame-retardant ABSUL94-V0 is optional)

### Dimension

Unit:mm

Length	522±2mm / 20.55inch
Width	239±2mm / 9.41inch
Container Height	223±2mm / 8.78inch
Total Height	223±2mm / 8.78inch



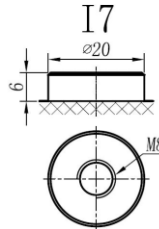
### Application

- ◆ Electric tools or toys
- ◆ Electric Bicycle/Tricycle
- ◆ Golf trolleys and golf cart
- ◆ Patrol car
- ◆ Electric Sight-seeing Tour Bus
- ◆ Sweeper
- ◆ Wheelchairs
- ◆ Lawn mowers
- ◆ Illumination light

### Terminal

Unit:mm

Terminal Type: I7



### Weight

66kg

145.5lbs

 Merkez

100. Yıl Bulvarı 1232. Sokak  
(Eski 40. Sokak) No: 65  
Ostim / ANKARA

 Tel&Fax

T. (0.312) 354 16 45  
(0.312) 385 55 60  
F. (0.312) 354 07 97

 Servis

100. Yıl Bulvarı 1234. Sokak  
(Eski 57. Sokak) No: 91  
Ostim / ANKARA

 Fabrika

Kırıkkale OSB Kızılırmak Caddesi  
4. Sokak No: 6  
Yahşihan / KIRIKKALE

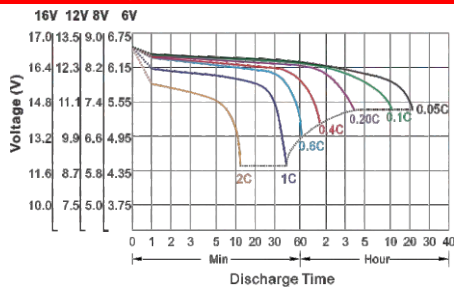
# YALÇIN GOLD BATTERY

## Specificaion

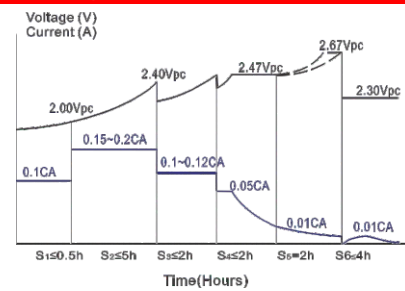
Nominal Voltage	12V
Nominal Capacity	253Ah
Rated Capacity	C20(1.80V/cell) 253Ah
(25°C)	C10(1.80V/cell) 230Ah
	C5(1.75V/cell) 220Ah
Container Material	ABS (Flame-retardant ABSUL94-V0 is optional)
Operating Temperature Range	Discharge -20 ~ +50°C
	Charge 0 ~ +40°C
	Storage -15 ~ +40°C
Capacity Affected by Temperature	40°C / 104°F 106%
	25°C / 77°F 100%
	0°C / 32°F 86%
	-10°C / 14°F 65%
Charge Method	Please refer to the "Charge Characteristics (25°C)" below
Monthly Self Discharge	<3%, GDC series stored at 25°C require a supplementary charge every six months, the charging interval would shrink when the ambient temperature went higher

## Performance Curve

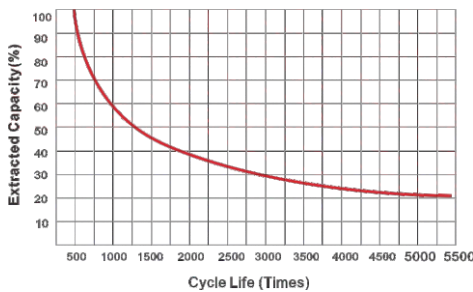
### Discharge Characteristics ( 25°C )



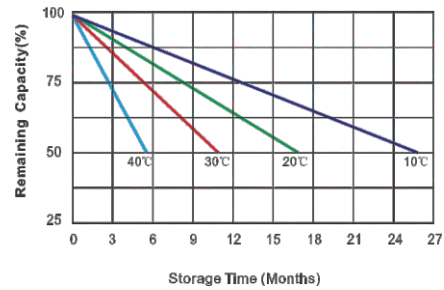
### Charge Characteristics ( 25°C )



### Cycle Lives With Depth Of Discharge



### Self-Discharge Characteristics



Merkez

100. Yıl Bulvarı 1232. Sokak  
(Eski 40. Sokak) No: 65  
Ostim / ANKARA

Tel&Fax

T. (0.312) 354 16 45  
(0.312) 385 55 60  
F. (0.312) 354 07 97

Servis

100. Yıl Bulvarı 1234. Sokak  
(Eski 57. Sokak) No: 91  
Ostim / ANKARA

Fabrika

Kırıkkale OSB Kızılırmak Caddesi  
4. Sokak No: 6  
Yahşihan / KIRIKKALE