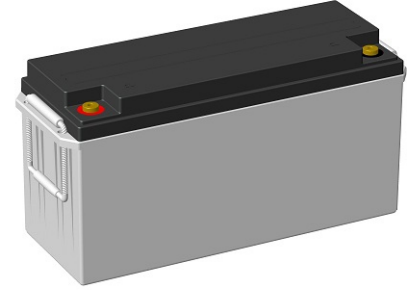


# YALÇIN GOLD BATTERY

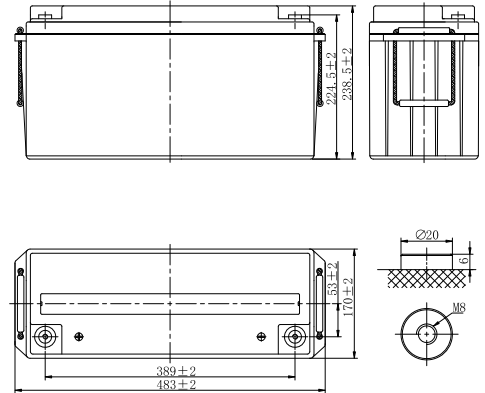
## GLL12150.0 (12V150AH)

### Specifications

Rated Voltage	12V	
Nominal Capacity	C <sub>10</sub> , 1.80V/cell	150Ah
Dimension	Length	483±2mm (19.0 inches)
	Width	170±2mm (6.69 inches)
	Container Height	238.5±2mm (9.39 inches)
	Total Height	238.5±2mm (9.39 inches)
Approx Weight	46.5kg (102.5 lbs)	
Terminal	M8	
Container Material	ABS	
Rated Capacity(25°C)	157.6 Ah	C20(7.88A, 1.80V/cell)
	150.0 Ah	C10(15.0A, 1.80V/cell)
	127.5 Ah	C5(25.5A, 1.75V/cell)
	116.1Ah	C3(38.7A, 1.75V/cell)
	87.5 Ah	C1(87.5A, 1.60V/cell)
Max. Discharge Current	1500A (5s)	
Internal Resistance(25°C)	Approx 3.5mΩ	
Operating Temp. Range	Discharge	-15 ~ 50°C (5 ~ 122°F)
	Charge	-20 ~ 40°C (-4 ~ 104°F)
	Storage	-15 ~ 40°C (5 ~ 104°F)
Nominal Operating Temp. Range	25±3°C (77±5°F)	
Standby Use	Initial Charging Current less than 45A. Voltage	
	2.23V~2.27V at 25°C(77°F)Temp. Coefficient -3mV/°C	
Equalization Use	Initial Charging Current less than 45A. Voltage	
	2.35V~2.40V at 25°C(77°F)Temp. Coefficient -4mV/°C	
Cycle Use	Initial Charging Current less than 45A. Voltage	
	2.40V~2.50V at 25°C(77°F)Temp. Coefficient -5mV/°C	
Effect of temp. to Capacity	40°C (104°F)	103%
	25°C (77°F)	100%
	0°C (32°F)	86%
Self Discharge	Yalcin Gold series batteries may be stored for up to 6 months at 25°C(77°F) and then a freshening charge is required. For higher temperatures the time interval will be shorter.	



### Layout



### Constant Current Discharge (Amperes) at 25°C (77°F)

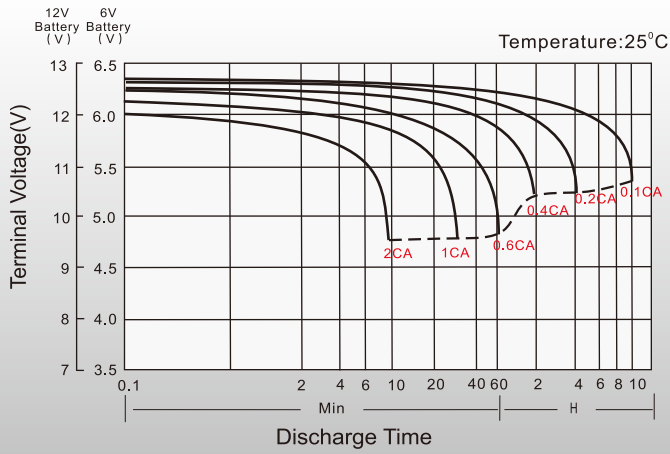
F.V/Time	5min	10min	15min	30min	45min	1h	1.5h	2h	3h	4h	5h	6h	8h	10h	20h
1.85V/cell	296.5	210.8	182.8	118.7	88.6	76.6	56.7	47.7	35.0	27.4	23.8	21.0	16.1	14.3	7.60
1.80V/cell	337.2	239.3	207.1	129.2	93.9	79.4	58.6	49.2	37.9	29.3	25.0	22.5	17.0	15.0	7.88
1.75V/cell	366.2	259.5	224.2	131.9	97.3	83.3	61.6	51.8	38.7	29.8	25.5	22.7	17.1	15.2	7.95
1.70V/cell	391.5	276.7	238.2	134.5	99.3	85.0	62.8	52.8	39.4	30.4	25.9	22.8	17.3	15.3	8.03
1.65V/cell	405.2	285.4	245.1	136.5	100.7	86.2	63.8	53.6	39.8	30.8	26.4	22.9	17.6	15.5	8.13
1.60V/cell	419.5	295.2	252.7	138.5	102.2	87.5	64.7	54.4	40.2	31.2	26.8	23.1	17.8	15.7	8.23

### Constant Power Discharge (Watts/cell) at 25°C (77°F)

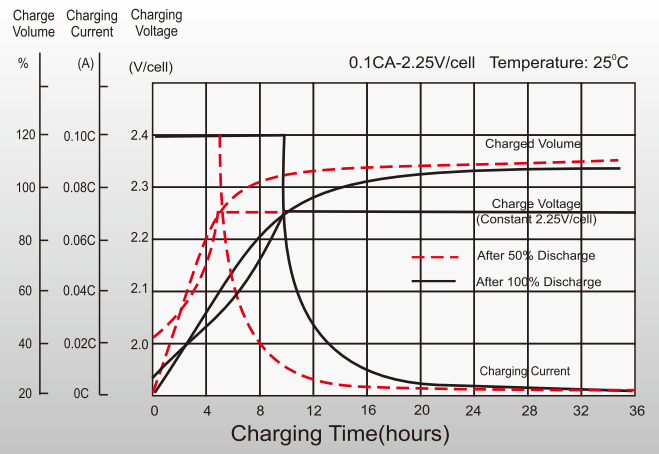
F.V/Time	5min	10min	15min	30min	45min	1h	1.5h	2h	3h	4h	5h	6h	8h	10h	20h
1.85V/cell	553.7	396.6	346.1	226.8	170.4	148.3	109.9	92.7	68.3	53.8	46.9	41.5	32.0	28.5	15.1
1.80V/cell	619.4	443.7	387.1	245.0	179.4	152.7	113.1	95.3	73.8	57.2	49.1	44.4	33.6	29.8	15.7
1.75V/cell	661.1	473.5	413.2	248.1	184.8	159.5	118.4	99.9	75.0	58.1	49.8	44.6	33.7	30.1	15.8
1.70V/cell	695.0	497.8	434.4	250.9	187.2	161.9	120.2	101.4	76.2	58.9	50.5	44.7	34.2	30.3	15.9
1.65V/cell	706.3	505.9	441.4	252.7	188.8	163.3	121.4	102.5	76.6	59.6	51.3	44.8	34.6	30.7	16.1
1.60V/cell	716.2	513.0	447.6	253.8	189.8	164.5	122.3	103.3	76.9	60.0	51.8	45.0	34.9	31.0	16.3

# YALÇIN GOLD BATTERY

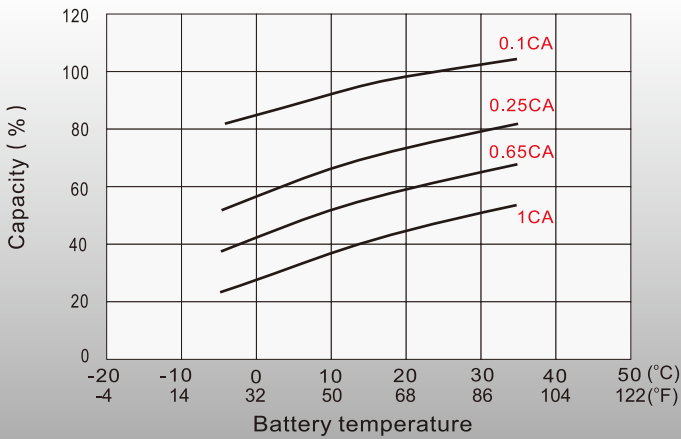
## Discharge Characteristics



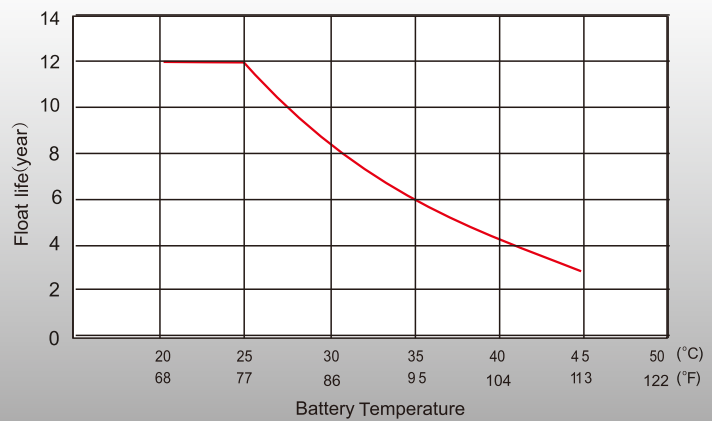
## Float Charging Characteristics



## Temperature Effects in Relation to Battery Capacity



## Effect of Temperature on Long Term Float Life



### Merkez

100. Yıl Bulvarı 1232. Sokak  
(Eski 40. Sokak) No: 65  
Ostim / ANKARA

### Tel&Fax

T. (0.312) 354 16 45  
(0.312) 385 55 60  
F. (0.312) 354 07 97

### Servis

100. Yıl Bulvarı 1234. Sokak  
(Eski 57. Sokak) No: 91  
Ostim / ANKARA

### Fabrika

Kırıkkale OSB Kızılırmak Caddesi  
4. Sokak No: 6  
Yahşihan / KIRIKKALE