

# YALÇIN GOLD BATTERY

## YG12070.0(12V70Ah)

### Specifications

Nominal Voltage		12 V
Capacity (25 C)	10HR(10.8V)	70 Ah
	5HR(10.5V)	61.5Ah
	1HR(9.60V)	43.4Ah
Dimension	Length	260mm ± 2 (10.24inch)
	Width	168mm ± 2 (6.61inch)
	Height	211mm ± 2 (8.31inch)
	Total Height	T5: 233 ± 2mm (9.17inch) T9: 214 ± 2mm (8.43inch)
Approx. Weight		21.5kg (47.3lbs) ± 4%
Terminal type		T5/T9
Internal resistance (Fully charged, 25 C)		Approx. 6.5m Ω
Capacity affected by temperature (10HR)	40 C	102%
	25 C	100%
	0 C	85%
	-15 C	65%
Self-discharge (25 C)	3 month	Remaining Capacity: 91%
	6 month	Remaining Capacity: 82%
	12 month	Remaining Capacity: 65%
Nominal operating temperature		25 C ± 3 C (77 F ± 5 F)
Operating temperature range	Discharge	-15 ▲ 50 C (5 ▲ 122 F)
	Charge	-10 ▲ 50 C (14 ▲ 122 F)
	Storage	-20 ▲ 50 C (-4 ▲ 122 F)
Float charging voltage(25 C)		13.50 to 13.80V Temperature compensation: -18mV/ C
Cyclic charging voltage(25 C)		14.50 to 14.90V Temperature compensation: -30mV/ C
Maximum charging current		21A
Terminal material		Copper
Maximum discharge current		700A(5 sec.)
Designed floating life(20 C)		12 years

- ◆ Absorbent glass mat technology;
- ◆ Recognized by UL & CE;
- ◆ ABS container.

### Constant Current Discharge Characteristics (A, 25°C)

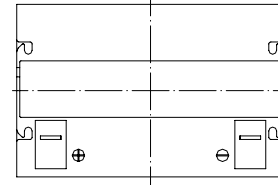
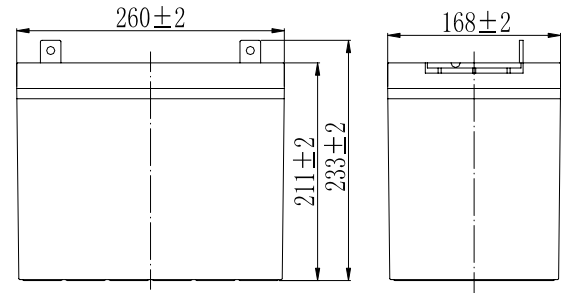
F.V/TIME	10min	15min	30min	60min	2h	3h	4h	5h	8h	10h	20h
9.60V	147	116	70.0	43.4	25.6	17.9	14.6	12.5	8.57	7.13	3.74
9.90V	143	113	68.6	42.7	25.4	17.7	14.6	12.4	8.52	7.11	3.73
10.2V	137	109	66.5	41.7	25.2	17.6	14.5	12.3	8.46	7.09	3.72
10.5V	131	105	64.9	40.8	24.8	17.5	14.4	12.3	8.40	7.05	3.70
10.8V	123	99.3	62.5	39.6	24.2	17.0	13.9	11.9	8.15	7.00	3.68

### Constant Power Discharge Characteristics (Watt, 25°C)

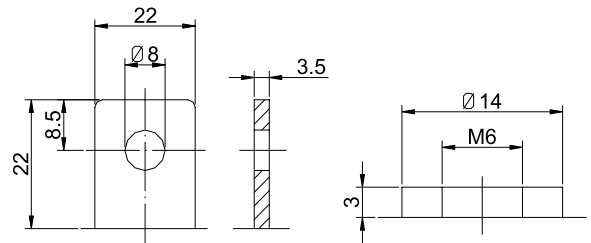
F.V/TIME	10min	15min	30min	60min	2h	3h	4h	5h	8h	10h	20h
9.60V	1588	1268	785	495	296	210	172	148	102	85.1	44.9
9.90V	1540	1238	770	487	294	209	171	147	101	84.9	44.8
10.2V	1476	1192	746	475	292	207	170	146	100	84.7	44.7
10.5V	1413	1152	728	466	287	206	169	145	99.8	84.2	44.4
10.8V	1334	1091	701	451	280	200	164	140	96.8	83.6	44.1

Note: The above characteristics data can be obtained within three charge/discharge cycles.

### Dimensions



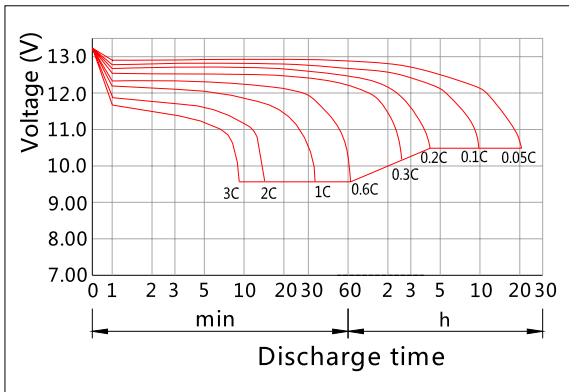
### Terminal



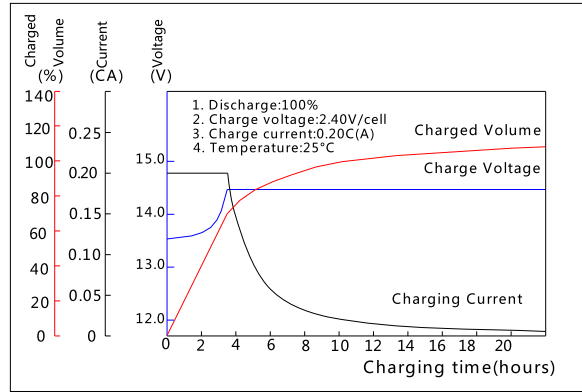
Terminal T5

Terminal T9

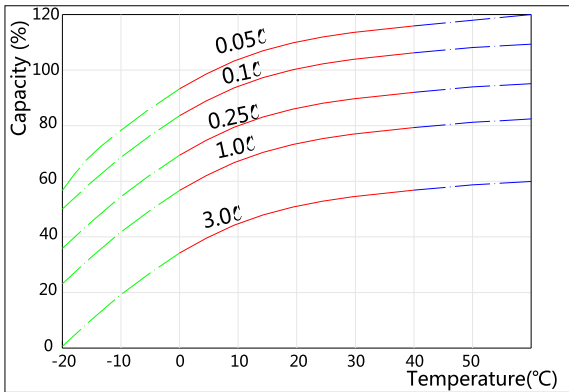
### Discharge Characteristics(25°C)



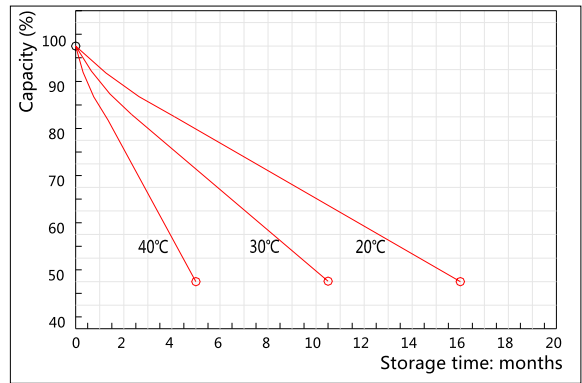
### Charging Characteristics(25°C)



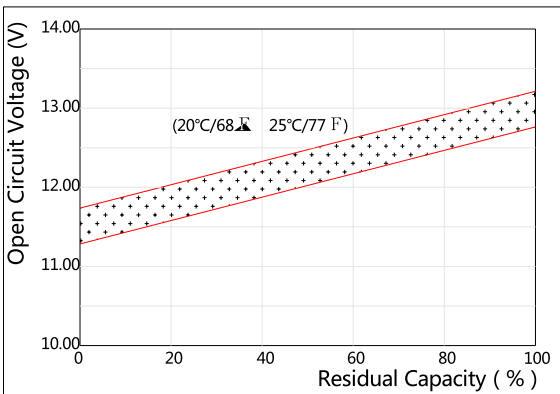
### Effect of Temperature on Capacity



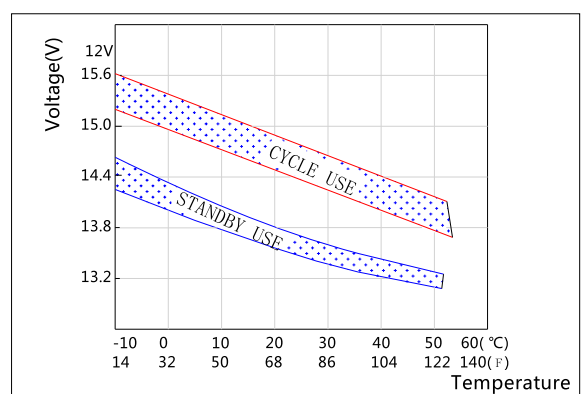
### Self-discharge Characteristics



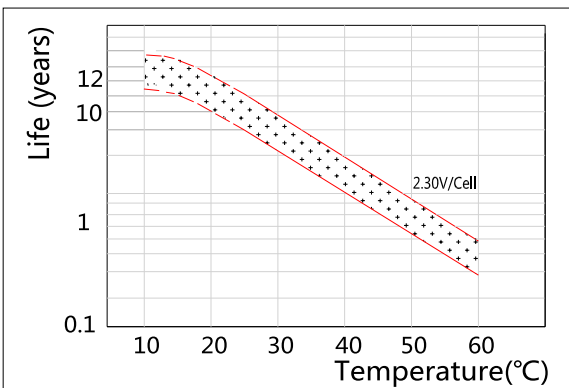
### The Relationship for Open Circuit Voltage and Residual Capacity (25°C)



### The Relationship for Charging Voltage and Temperature



### Floating Life on Temperature



### Cycle Life on D.O.D(25°C)

